

POET'S JOY

W.A.R.A. WINTER 24 HR ROGAINE
STATE CHAMPIONSHIPS
13 - 14TH JUNE 1992

SCALE 1 : 50 000



Contour interval 10 metres

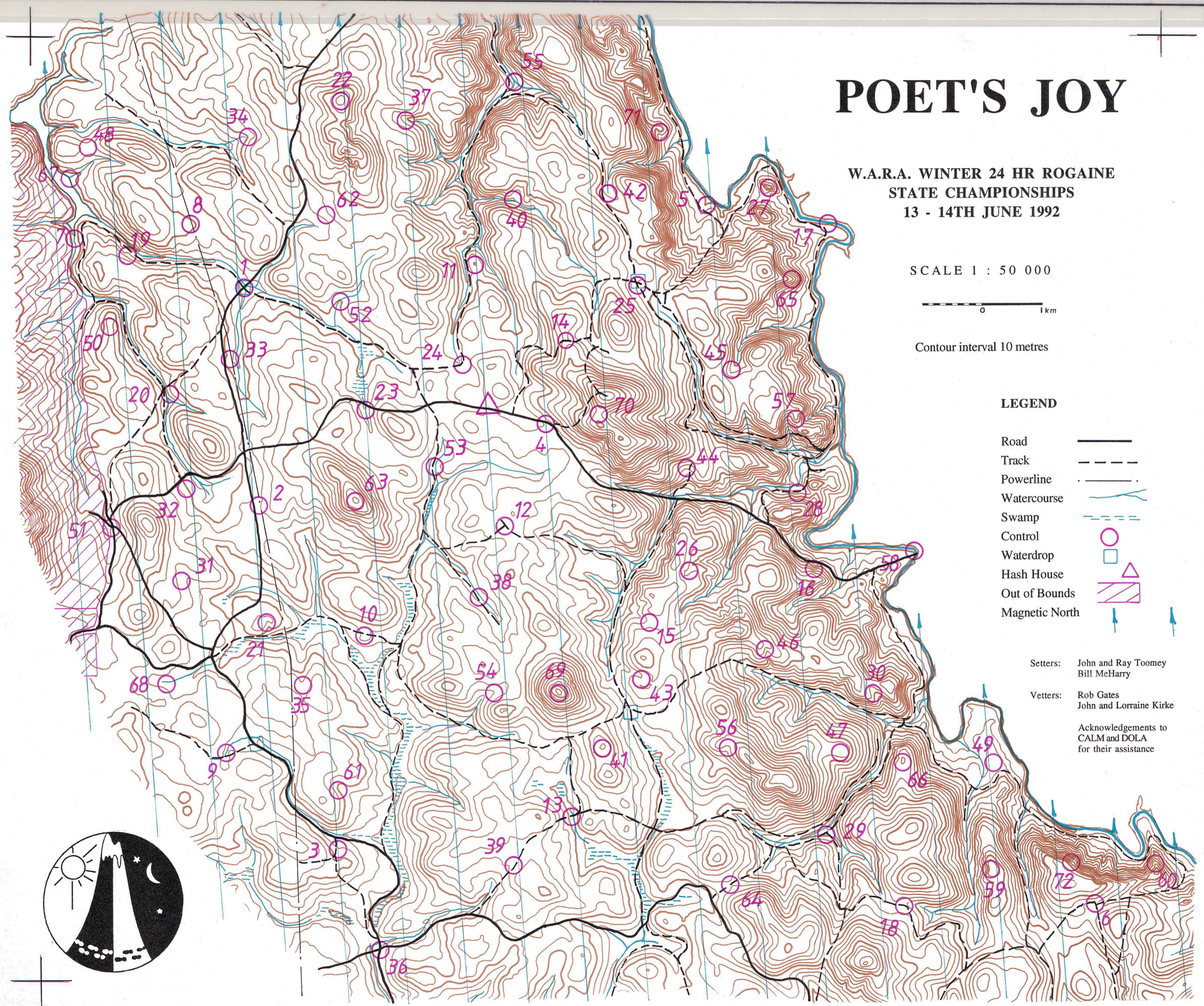
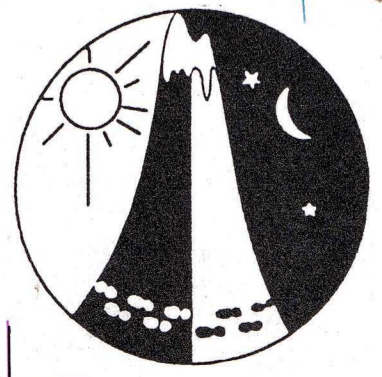
LEGEND

- Road
- Track
- Powerline
- Watercourse
- Swamp
- Control
- Waterdrop
- Hash House
- Out of Bounds
- Magnetic North

Setters: John and Ray Toomey
Bill MeHarry

Vetters: Rob Gates
John and Lorraine Kirke

Acknowledgements to
CALM and DOLA
for their assistance



POET'S JOY 24 HR ROGAINE - STATE CHAMPIONSHIPS 1992

Code	Control Description	Points	Code	Control Description	Points
1.	The road/track junction	20	39.	90 m west of a blazed tree	50
2.	50 m North of pylon # 198	20	40.	A stream junction	50
3.	A 30 x 20 m gravel clearing - a First Aid control!	20	41.	The summit	50
4.	A blazed tree - 25 m at 150°	20	42.	The head of the watercourse	50
5.	Under an old bridge - east end	20	43.	Head of the watercourse - a 100 m x 100 m rock surface	50
6.	An indistinct track junction	20	44.	Head of the watercourse	50
7.	A causeway bridge on an old formation	30	45.	Head of the gully - on a fallen tree	50
8.	30 m at 220 ° from pylon #212	30	46.	Head of the gully	50
9.	The bend in the stream	30	47.	A 40 m x 30 m semi-clearing on a knoll	50
10.	In the trunk of the jarrah tree on the south side of the track where it crosses the spur	30	48.	The saddle	50
11.	The knoll-top of	30	49.	A knoll on the spur	50
12.	The track junction	30	50.	On the spur - on a rough cleared area running South East	60
13.	The stream/track junction	30	51.	In the Willowdale Aboretum - a grove of Eucalyptus Paniculata	60
14.	The saddle - on the track	30	52.	A stream/track crossing	60
15.	Head of the gully - a track junction	30	53.	The bend in the creek - west side	60
16.	Upper part of the gully	30	54.	The gully - a track crossing	60
17.	The riverbank - 50 m north of a blazed tree	30	55.	The creek junction	60
18.	South side of a 30 m x 20 m clearing - 30 m east of a blazed tree	30	56.	Head of the shallow gully	60
19.	A large rock surface - highest point	40	57.	The spur - upper part	60
20.	Bend in a minor track	40	58.	The crossing - 70 m at 290°	60
21.	Upper part of the gully	40	59.	The summit	60
22.	The summit	40	60.	On the spur	60
23.	20 m east of a blazed tree - on a log crossing the stream	40	61.	SW side of the broad gully - a large 1.5 m diameter tree stump	80
24.	The bend in the track	40	62.	A 100 x 50 m semi-clearing - Eastern edge	80
25.	A blazed tree - 190 m south of the junction on the track - west side	40	63.	The summit - a 1.2 m diameter x 3 m tree stump	80
26.	Head of the watercourse - East of 150 x 100 m rock surface	40	64.	The saddle	80
27.	The summit	40	65.	On the spur - flatter part	80
28.	A gravel pit, 30 m x 10 m - behind the old loading ramp	40	66.	The summit	80
29.	The track junction	40	67.	End of the creek	100
30.	Head of the gully	40	68.	Upper part of the shallow gully - a large forked jarrah with another leaning against it.	100
31.	A 20 m x 20 m clearing - 40 m south of a blazed tree	50	69.	A 5 m x 15 m rock clearing - 30 m at 170° from the summit	100
32.	A jarrah of large girth - 50 m at 10° from a blazed tree	50	70.	The saddle - at a 3 m blackboy	100
33.	The track/gully intersection - north side	50	71.	The spur - top of	100
34.	Head of the watercourse - vegetation change	50	72.	Head of the watercourse	100
35.	East of the head of the gully - on an indistinct track	50			
36.	The track junction - 20 m at 125°	50			
37.	Head of the stream	50			
38.	A track/stream crossing	50			

Number of Controls = 72

Total Available Points = 3650